



Setting the Stage for Student Centered Learning





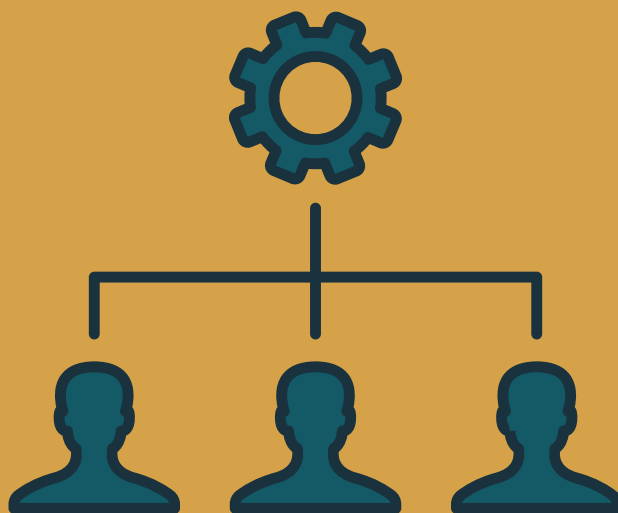
HUMANIZE

- Focus on a strong teacher and student interaction
- Create a culture of trust, exploration and expression
- Teachers recognize students' particular interests & learning styles



MODEL & MOVE ASIDE

- Practice how to analyze and evaluate media
- Show how to purposefully use media & tech tools
- Become the guide on the side and facilitate learning



COLLABORATE

- Offer connecting opportunities
- Provide regular opportunities for collaboration
- Take part in authentic networked interactions



CULTURE & POP CULTURE

- Know your audience & welcome their culture to be part of learning
- Ask students about their interests
- Make culture matter



DESIGN SPACE & TIME

- Allow for students to co-design learning
- Plan & provide practice time for students
- Design for student participation of decision-making



SHARE

- Permit for sharing to an authentic audience (ex. Science Fair)
- Connect students to an authentic audience who can provide feedback
- Celebrate student work with a showcase